

WISCONSIN 9/11 MEMORIAL 3-5 LESSON PLAN

Overview

Students will understand the impact of the events of 9/11 and connect this understanding to their lives and communities.

Attachments

Summary Document

Maps—Group Investigation

Journey of the Beam—Timeline

Reflection Questions

Wisconsin Academic Standards Addressed

Introduction

Have students draw images or write down words they think of when they hear the phrase *9/11*. Then have them take a minute to share with a partner or small group and circle any words or ideas that are similar. Once sharing is done, have them start writing down questions that could connect to the events of 9/11 or New York City. Once each student has 3 or more questions written down, have them share their questions with their small group or the whole class, depending on the environment.

Prompting Questions

- Do students know the location of the World Trade Center?
- Do students know how far New York City is from Wisconsin?
- What are some of the similarities between a community in New York and a community in Wisconsin?

Summary

Read the summary of the events on 9/11 with your students, noting the highlighted vocabulary. Discuss the heroes and helpers of 9/11 and within your community. Have the students keep their question sheet out so that they can add to it as you read.

Maps—Group Investigation

Share the attached maps with your students or have them research online. Have them draw the following connections and numbers on their maps:

- How far is New York City from Wisconsin, specifically your town?
- How long would it take to drive, walk or fly?
- How many states are there in between?

Journey of the Beam

The journey of the beam shows students the connection of the Wisconsin 9/11 Memorial to New York City. Follow the beam's journey with your students and discuss the different stops it makes along the way.

Reflection

Take some time with your students to reflect on the events that occurred on 9/11. How do those events connect to Wisconsin and to our community? Fill in the follow up questions and have students share their thoughts on this significant day.

WISCONSIN ACADEMIC STANDARDS

Standard SS.Inq1: Wisconsin students will construct meaningful questions that initiate an inquiry.

SS.Inq1.a.i Develop list of open- and closed-ended questions on a topic or issue.

SS.Inq1.b.i Develop list of questions that support the research through discussion and investigation to guide inquiry.

Standard SS.Inq2: Wisconsin students will gather and evaluate sources.

SS.Inq2.a.i Gather a variety of resources into categories to guide the inquiry.

SS.Inq2.b.i Evaluate resources to determine which best support the inquiry and supporting questions.

Standard SS.Geog1: Wisconsin students will use geographic tools and ways of thinking to analyze the world.

SS.Geog1.a.4-5 Summarize how location (absolute and relative) affects people, places, and environment. Construct maps (paper or digital), charts, and graphs using appropriate elements (i.e., date, orientation, grid, scale, title, author, index, legend, situation).

SS.Geog1.b.i Identify purposes of and differences among maps, globes, aerial photographs, charts, and satellite images.

SS.Geog1.c.4-5 Create and label a map (paper or digital) of the local community, state, tribal lands, and country, including both physical (e.g., oceans and continents) and human (e.g., roads, buildings) characteristics. Identify and construct regions (digital or paper) in Wisconsin and the United States.

Standard SS.Hist3: Wisconsin students will connect past events, people, and ideas to the present; use different perspectives to draw conclusions; and suggest current implications.

SS.Hist3.a.i Compare events in Wisconsin history to a current issue or event.

SS.Hist3.b.i Identify different historical perspectives regarding people and events in the past.

SS.Hist3.c.i Explain how historical events have possible implications on the present.

SUMMARY

What happened on September 11, 2001?

The **World Trade Center** was a group of seven buildings in a crowded part of New York City. Many people worked at and visited the buildings each day. There were also stores, restaurants and a variety of other businesses there. The centerpieces of the World Trade Center were the **Twin Towers**. The towers each had 110 floors and were the tallest buildings in New York City. People came from all over the world to see them.

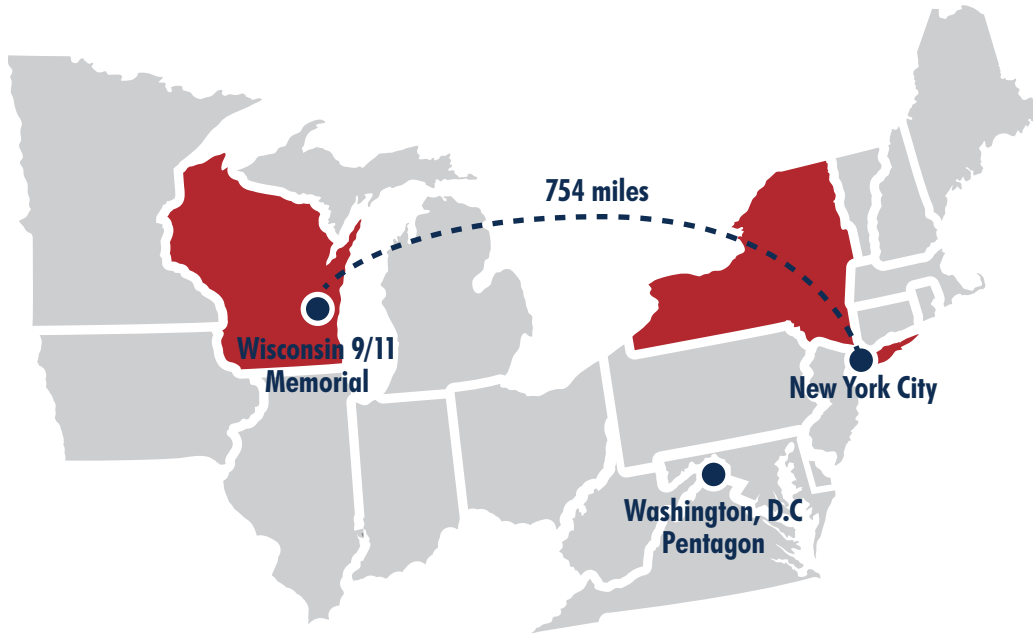
On September 11, 2001 (or 9/11) a group of 19 men (from other countries called “al-Qaeda”) crashed two airplanes into the Twin Towers and one into the **Pentagon**. The men tried to take control of a fourth plane but the passengers fought back. That plane crashed in a field in Pennsylvania.

There were many people in the buildings when the planes crashed into them, around 17,000. Most people were able to get out with the help of **first responders**. Police officers, firefighters and other volunteers helped those who were trapped in the building. But, before they could get everyone out, the buildings collapsed and nearly 3,000 people were killed.

People came from all over to help those in New York City recover from this terrorist attack. The men who **hijacked** the planes hurt many people and thought they would make our country weaker. However, people worked together to support one another, help rebuild and remember those that were lost.

MAPS

Wisconsin to New York



New York City



JOURNEY OF THE BEAM

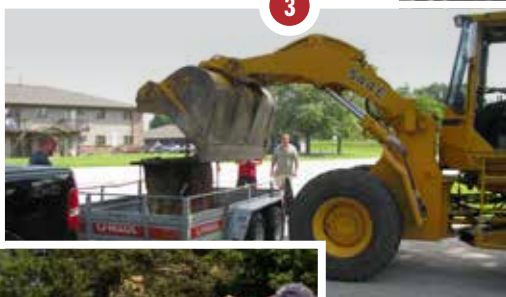
Timeline



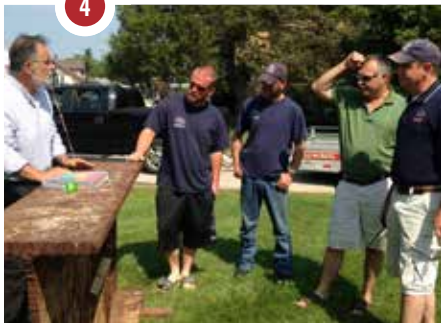
1 For weeks and months, Ground Zero, the location of the World Trade Center attacks, brought thousands of workers and volunteers together to clean up the area and start healing the wounds from the 9/11 attacks.



2 Our beam as it sat in the buildings



3 The journey begins



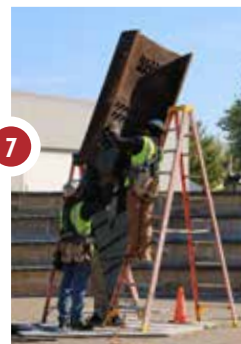
4 Receiving the beam



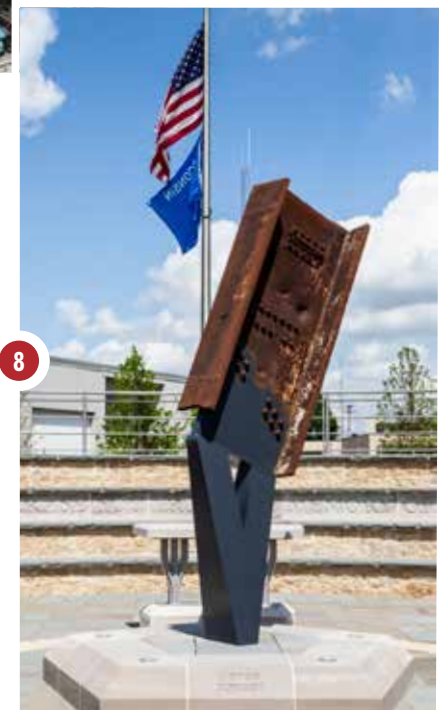
5 Breaking ground



6 Progress



7 Beam installation



8 The Memorial takes form

REFLECTION QUESTIONS

Where was the World Trade Center located? How far is that from Wisconsin?

How did the beam from North Tower make it to Wisconsin?

Who are the first responders in our community? What do they do to help?

When tragic events happen, how do communities come together?